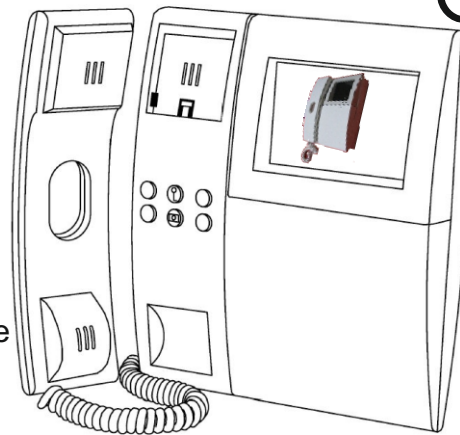


ELLISSE DOOR PHONE 22701

(MONITOR)

ELLISSE door phone 22701

Thank you for selecting Elkesan Acet door entry system! This user guide helps you take the most of your Elkesan Acet system.



USING THE DOOR PHONE, QUICK GUIDE

A visitor at the front door will press the call button of the door phone system. The entry panel of the system has illuminated name label windows and a button beside each window. When a button is pressed, the door phone of the corresponding flat will ring.

When the call button is pressed at the front door, the door phone in the flat will ring as long as the button is pressed. The picture will appear in the monitor automatically in few seconds. You pick up the handset and respond to the phone as you like, for example "B42" or "Smith". When you want to let the visitor to come in press the unlock button (button with key symbol) steadily for a few seconds. You can see the visitor clearly in the monitor also during the dark hours due to the sensitive camera and white target lights.

TALKING IN THE DOOR PHONE

Pick up the handset of the door phone in the flat and speak to it. Please speak loudly and clearly but do not shout. The user experience is specially taken into account: your voice is echoed back faintly so that you can be sure that the system is working correctly. The audio connection to the front door will begin when the visitor has called to the flat. Any conversation is possible only when the handset is picked up. Conversation is not possible and the voices of the flat can't be heard at the front door when the handset is hanged up. Voice connection between the flat and the entry panel will be hanged up only when a button of another flat is pressed in the entry panel. Doing so the door phone of some other flat will ring and the audio connection is moved to this flat. Speaking is possible only between the flat whose button is pressed and the entry panel at the front door.

UNLOCKING THE FRONT DOOR



The front door is opened by pressing the key symbol button of the door phone. You should press the button steadily for a couple of seconds, so that the visitor has time to open the front door. A buzzer is ringing at the door when the door can be opened. For your convenience the audio connection between the front door entry panel and the door phone is disconnected during the time the unlocking button is pressed. So you can ensure that the unlocking is successfully performed at the door. The door can be unlocked only after the call. The unlocking button does not function in other situations.

GUIDING THE VISITORS

You can instruct you frequent visitors to use the door phone system correctly: the call button should be fully pressed, the pressing should be steady and long enough, they should speak loudly and clearly not far from the entry panel but not shout. There is a buzzer in the lock of the door or in the entry panel which rings when the visitor can pull the door open.

VOLUME CONTROL OF THE RING TONE AND SETTINGS

It is possible to adjust the volume of the ring tone of Acet Ellisse 22701B door phone system. There is a control button at the bottom of the phone device to adjust the volume. The volume is changed by turning the button.



You can turn off the ring tone for example during night time. The phone is muted when the volume control button is turned to the left. Also the buttons for adjusting the quality of video are at the bottom of the phone device. The color saturation and brightness of the picture can be adjusted. In black-and-white model only the brightness is adjustable.

The phone does not ring at all when it is muted. Other functions of the phone are available. For example, if you know when someone is at the front door pressing the button of your flat, it is possible to open the audio connection and unlock the door.

The ring tone volume can be checked by the position of the volume control button. There is no special light indicating when the phone is muted.



Ring tone volume control. Turned off when the button is turned to left.



Brightness of the video picture.



Color saturation. Black and white when the button is turned to left.



Contrast.

SPECIAL FUNCTIONS

Ellisse video door phone has four (4) white extra buttons in addition to the unlocking button. They aren't normally activated but when needed special functions can be wired to them, for example opening the door of the flat, control the lights of the staircase, internal calls etc. If any functions are assigned to the buttons a separate instruction is provided.

VIDEO RECALL

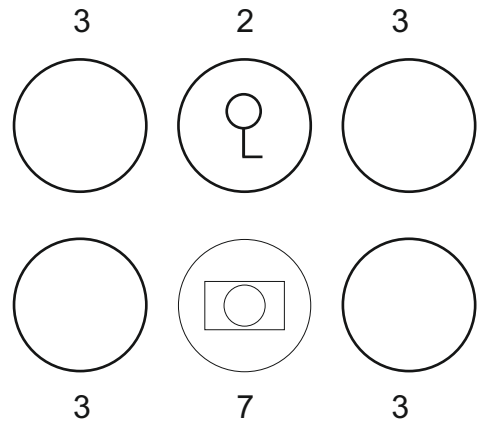
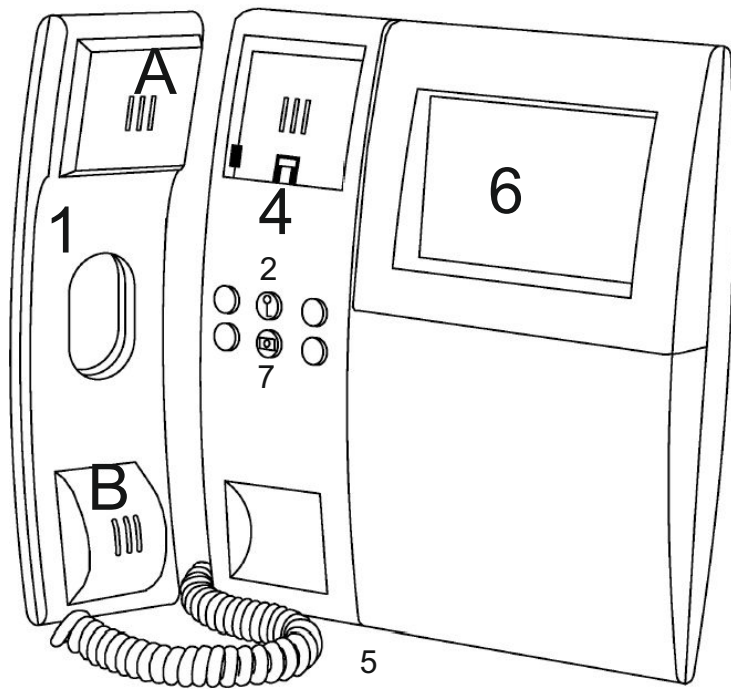
The video picture will appear in the monitor when the corresponding call button is pressed in the entry panel at the front door. Also you can start the video connection: press the video call button when the handset is not picked up (see next page). The picture will appear in the monitor. After that you can pick up the handset and talk to the visitor at the front door. The video picture is displayed 30 seconds. A new video connection can be started after a few seconds of the picture disappearing. When the picture is displayed in the monitor the handset can be picked up and conversation started.

PRECAUTIONS

The door phone ring tone is available only when the handset is hanged up. In this position the handset switch is pressed down.

Children under 12 years are not allowed to use the door phone system (device in the flat) alone. Children must be instructed to use the system correctly. They should be also reminded that the door phone is not a toy.

USER MANUAL OF THE ACET DOOR ENTRY SYSTEM



- 1) Phone handset
 - A) Speaker for the visitor's voice
 - B) Microphone where to speak
- 2) Door unlocking button
The front door is opened by pressing the button steadily for couple of seconds.
- 3) Extra buttons
The extra buttons are designated for example for controlling staircase lights. No functions are programmed in them.
- 4) Handset switch
The handset switch will open and close the voice connection to the entry panel at the front door.
- 5) Controls at the bottom of the phone device, see below
- 6) Video monitor where the picture appears automatically after starting the call.
- 7) Video call button.



Ring tone volume control. Turned off when the button is turned to left.



Brightness of the video picture.



Color saturation. Black and white when the button is turned to left.



Contrast.

USER MANUAL OF THE ACET DOOR ENTRY SYSTEM

MAINTENANCE OF DOOR PHONE

The main maintenance actions are cleaning and actions in connection of house renovation.

In daily use the door phone should be used carefully and firmly but in a gentle way.

Please do not use solvents when cleaning the device. Depending on the amount of use, the door phone device should be cleaned couple of times in a year using a damp soft cloth and neutral cleaner. Clean door phone is convenient to use, and it will stay clean and undamaged for long as people will handle it properly.

HOUSE RENOVATION ACTIONS

There are no user serviceable parts or changeable batteries or lights inside the door phone device. Anyway if you are renovating the flat so that the phone device is in a risk to get painted or dusty, it is recommended to remove it during the renovation and keeping it in a safe place. In addition, door phone device is not an expensive part and it might often be a good solution to change it to a new one during the renovation.

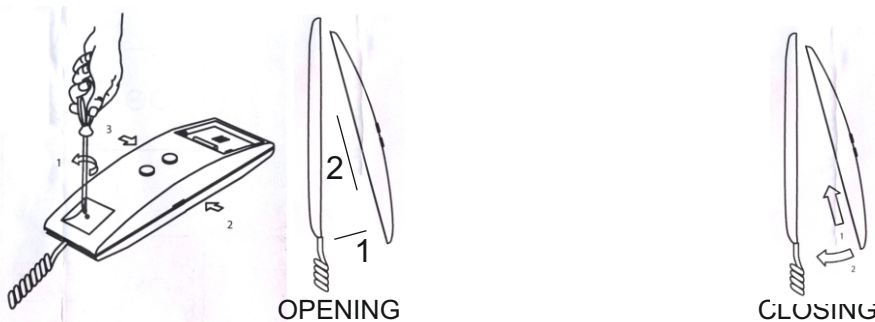
It is not recommended to cover the device with adhesive tape during the renovation. In that case the old wall material will be left at the background of the device. If the device will be changed to a new later the new device might be smaller than the old one. A phone device which is protected by adhesive tape might be stuck to the wall in which case it is not possible to detach it without damaging the wall. Sometimes the door phone device is mounted to the wall by using acrylic mass. In general, it is recommended to remove the phone device during the renovation as dust and dirty can damage it.

UNMOUNTING THE PHONE DEVICE

It's highly recommended to let a professional electrician to detach and mount the door phone device. There is no dangerous voltage inside the device but professionals have better qualifications for the operation.

Open the door phone device by opening the screw at the lower part of the handset using a cross head Phillips 1 screwdriver (small cross head screwdriver)) as shown in the picture. After that press the handset cover at both sides and lift the lower end of the cover up. See below. When closing the cover, please follow the instruction in reverse order.

In video door phone the wires are attached to quick connectors. So it is not necessary to detach the wires in the connectors before pulling the connectors apart from the device. The connectors should be protected for example by a plastic bag. If the wires need to be cut they should be first marked and documented and then cut to 2 centimeters. When doing so the wire setup is marked in two places. The wires should be protected for a short circuit using for example wire compression connectors (Dophin, Schotslock).



When the device is opened and the wires are detached the device can be unmounted on the wall by opening the fixing screws.

MOUNTING THE PHONE DEVICE

The phone device will be mounted in the wall. The cable can be led in at the back of the device, via the wiring opening.

The wires are connected to connectors as they originally were. Close the phone device in the opposite order: at first fasten the top edge of the cover using the small hooks there. Press the cover carefully to close it and fix the screw. Make sure that the cover is properly in its place. After that check the proper functioning by calling the device and testing all functions.