

SFERA

NEW 2 WIRE

AUDIO VIDEO

PUSHBUTTON PANELS



new SFERA

TWO PERSONALITIES
FOR ONE SINGLE
ELECTRONIC HEART

Design	2
Flexibility	4
Unlimited combinations	6
Technology, quality, strength	8
Functions	10
Ease of configuration and maintenance	14
Pushbutton panels overview	16
Support services	18
Electronic modules catalogue	20
SFERA New - catalogue and dimensions	22
SFERA Robur - catalogue and dimensions	23



The QR Code provides direct access to multimedia contents. The service is very easy to use, and only requires a smartphone with the free software needed for reading the code.

SFERA^{NEW}



ALLMETAL

ALLWHITE

ALLSTREET



UNMISTAKEABLE
STYLE



SFERA^{NEW}

EXTRA
STRONG

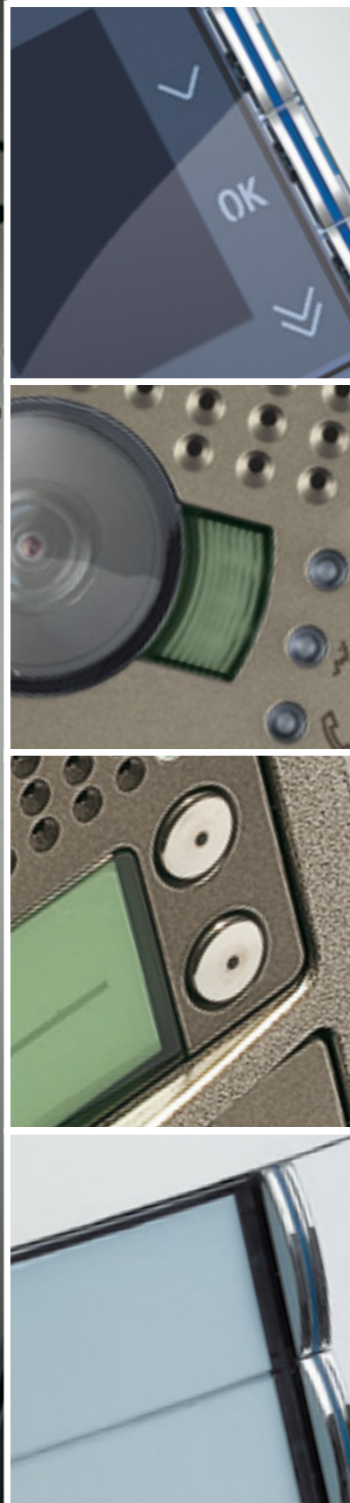


SFERA^{ROBUR}



SFERA^{ROBUR}

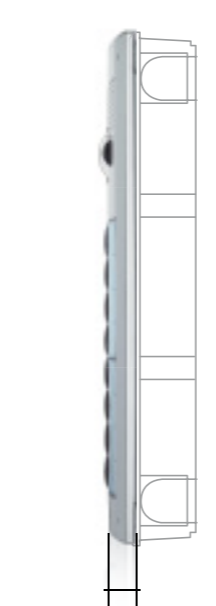




SFERA^{NEW}

Modern look suitable for all types of homes.
High perception of quality and sturdiness across the whole range.

- Three different colour variations, better look impact
- Perfect alignment of the modules
- Same colour variations also for the rainshields
- Lowered wall mounted boxes available in the same colour variations



Protrusion from the wall 15 mm only



ALLMETAL



ALLWHITE

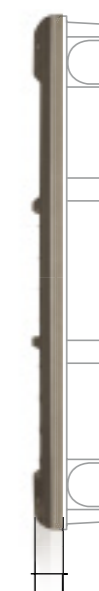


ALLSTREET

SFERA^{ROBUR}

Extra strong front section and frame for increased safety Flush mounted box (optional) in steel, to prevent the device being pulled off.

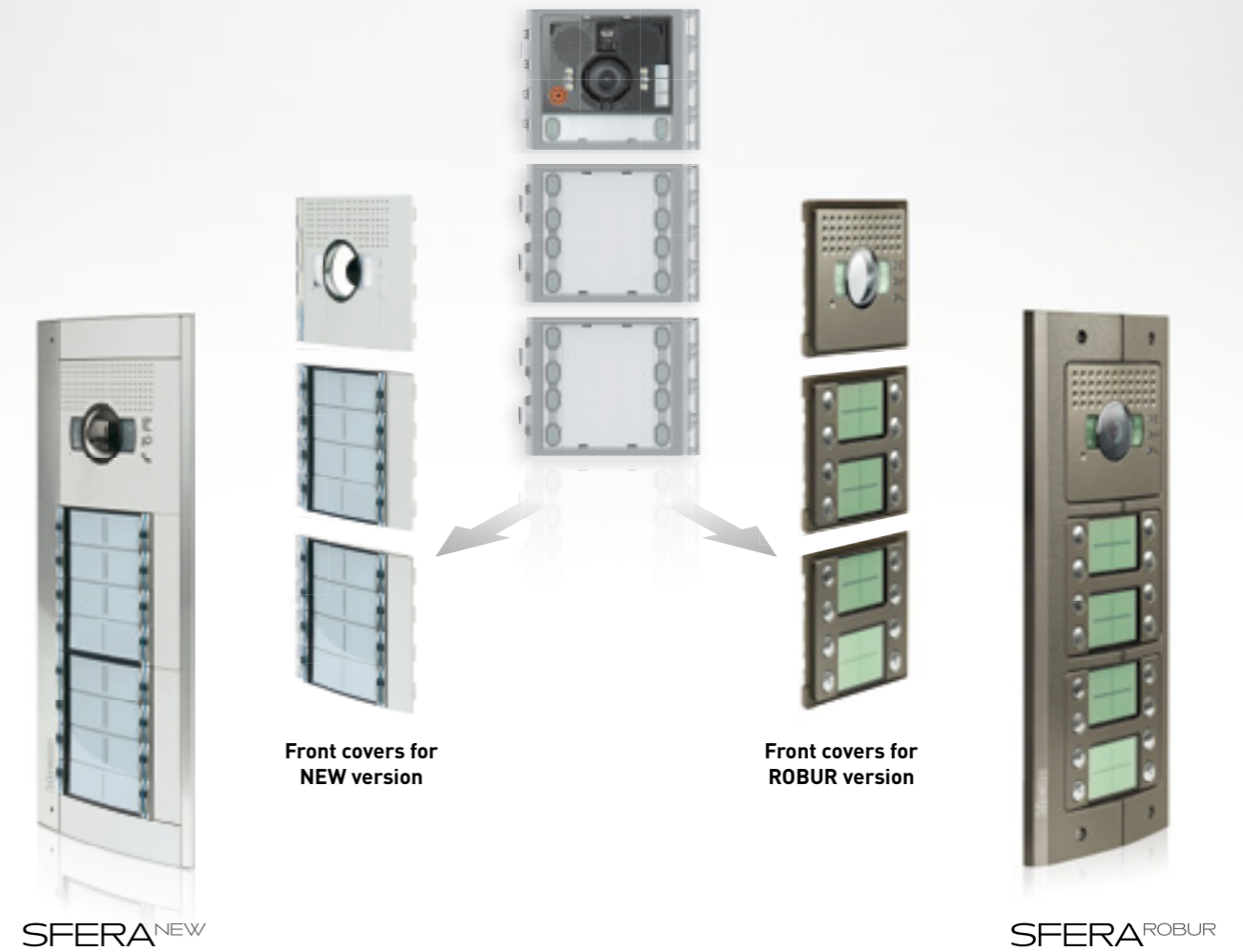
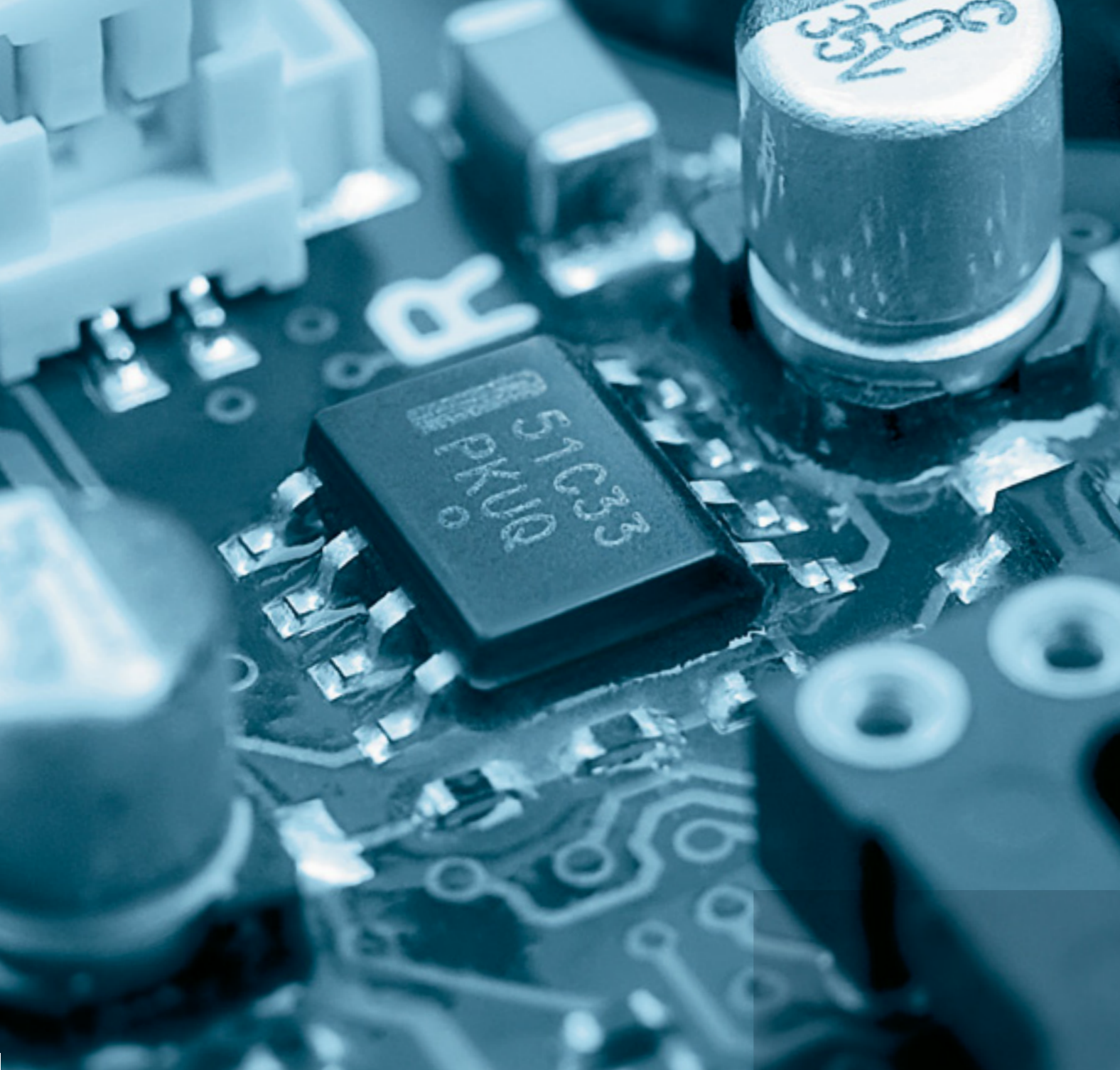
- Minimum protrusion from the wall
- Reinforced plastic components
- Compatible with SFERA New rainshields and wall mounted boxes



Protrusion from the wall 20.5 mm only



IS INNOVATIONS
NOT ONLY IN THE
DETAILS



MODULAR COMPOSITION OF THE FUNCTIONS

SEPARATE COMPOSITION OF THE FINISHES

AN ADVANTAGE FOR EVERYONE

TWO SOLUTIONS ONE SINGLE ELECTRONIC HEART

A flexible system

- The same electronic module may be used for both the "New" version and the "Robur" version
- Just a few codes to make warehouse storage and the job of the installer simpler.
- A wide range of audio and video functions with only 13 electronic modules.

13 function modules unlimited combinations

**A COMPACT AND COMPLETE RANGE
OF ELECTRONIC MODULES**

TRADITIONAL FUNCTIONS

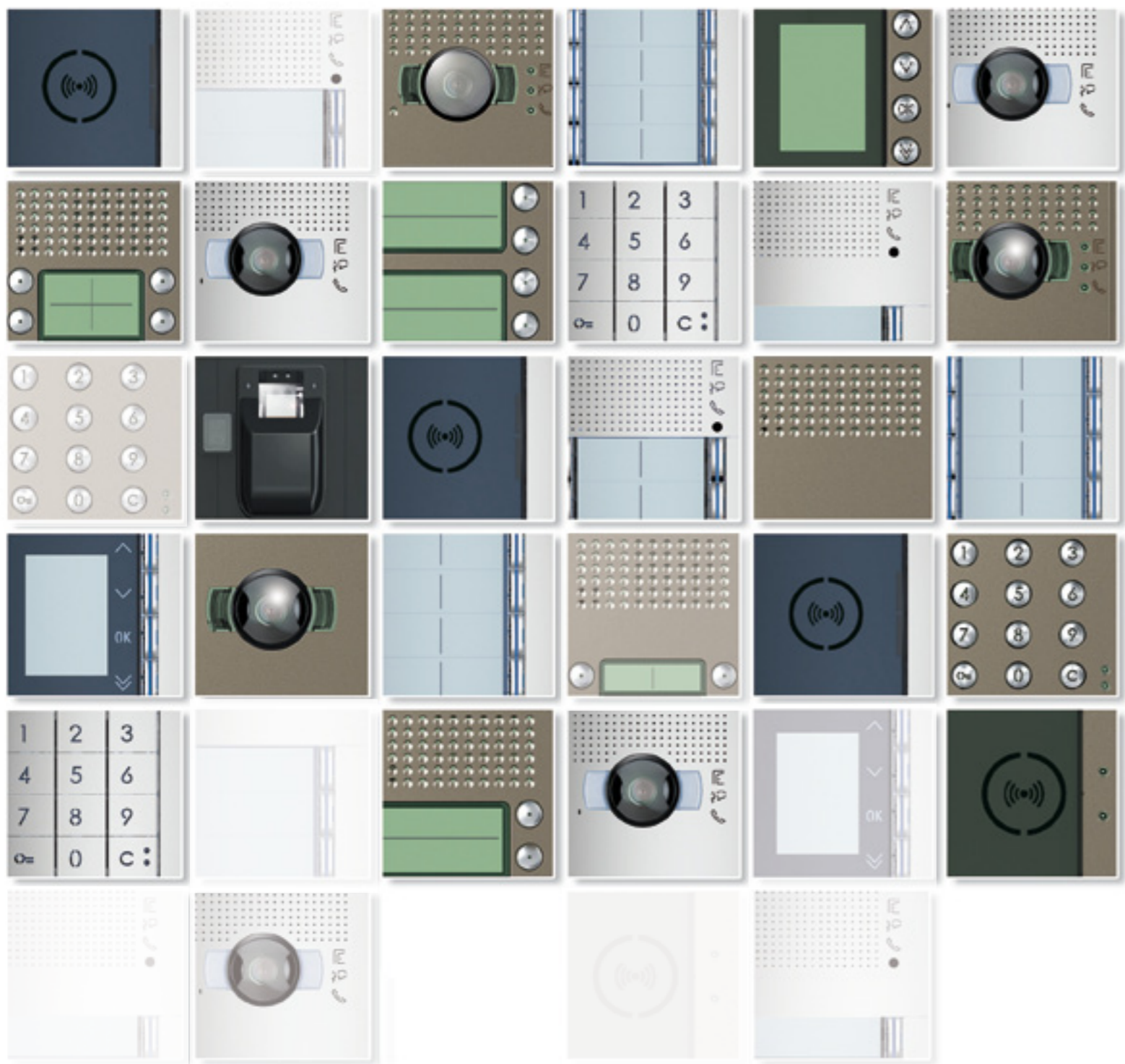
- Basic audio
- Audio
- Audio video
- Pushbuttons
- Display

SPECIALIST FUNCTIONS

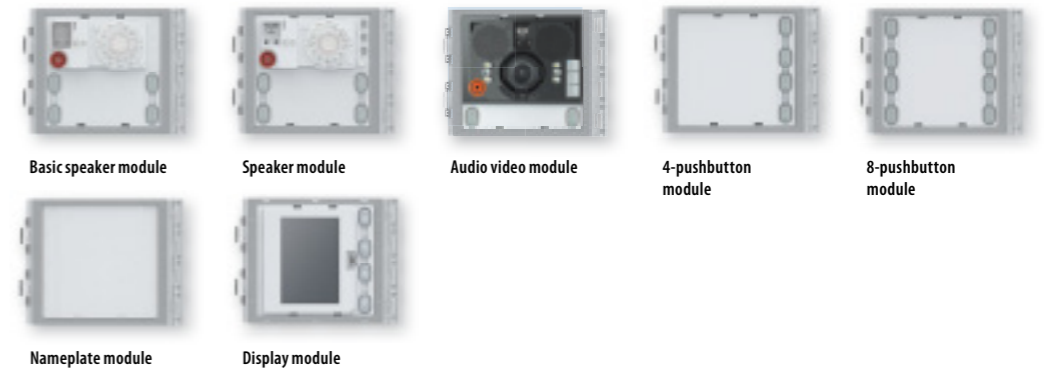
- Wide angle Audio video
- Night & Day camera and wide angle
- Inductive loop and control speech synthesis

DOOR LOCK RELEASE FUNCTIONS

- Keypad
- Badge reader
- Fingerprint reader



**FUNCTIONS:
TRADITIONAL**



**FUNCTIONS:
SPECIALIST**



**FUNCTIONS:
DOOR LOCK
RELEASE**



**UNLIMITED
COMBINATIONS**
FOR EACH INSTALLATION
REQUIREMENT

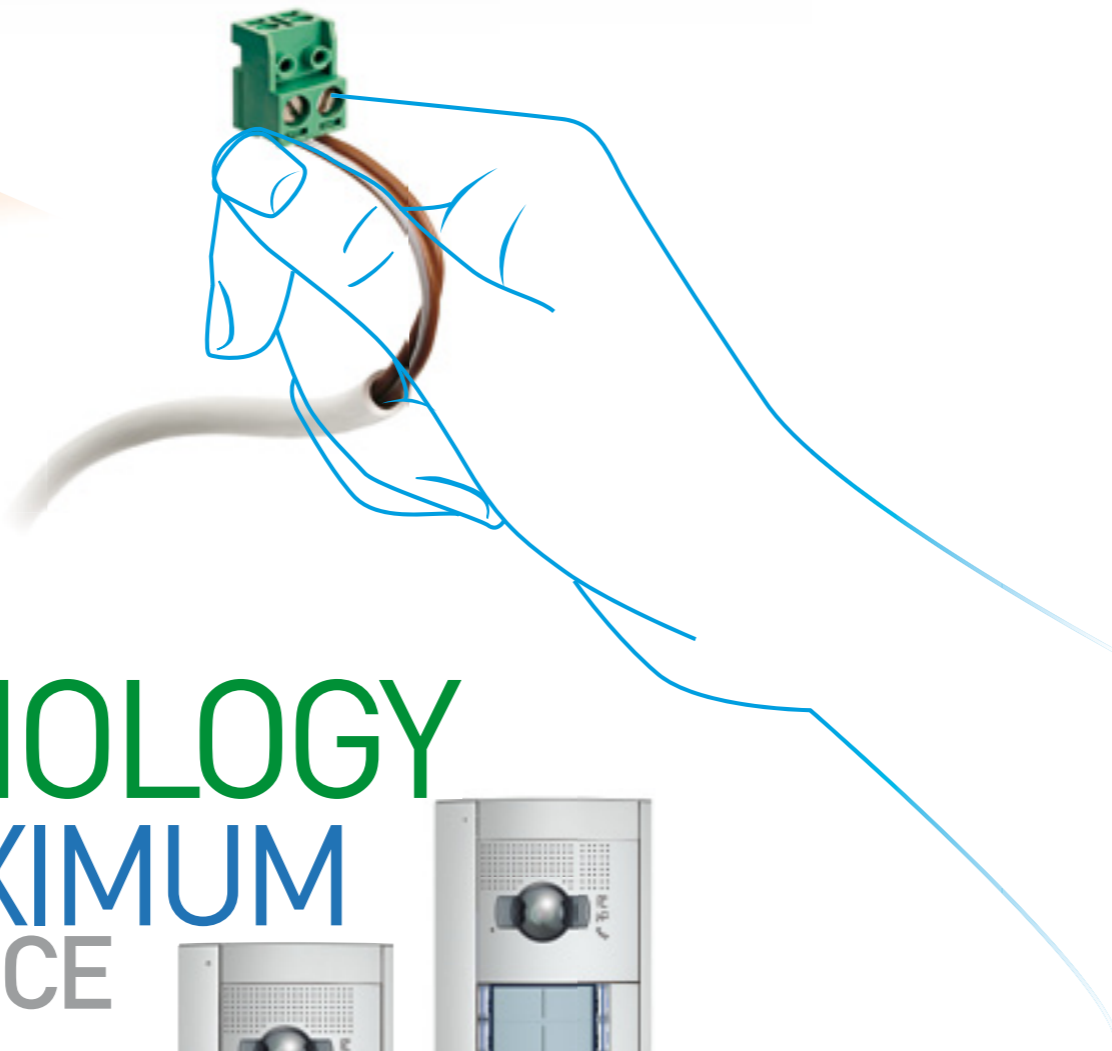
To guarantee maximum audio and video performance, and minimize installation and connection times, SFERA uses the 2 WIRE technology.

QUALITY AND STURDINESS

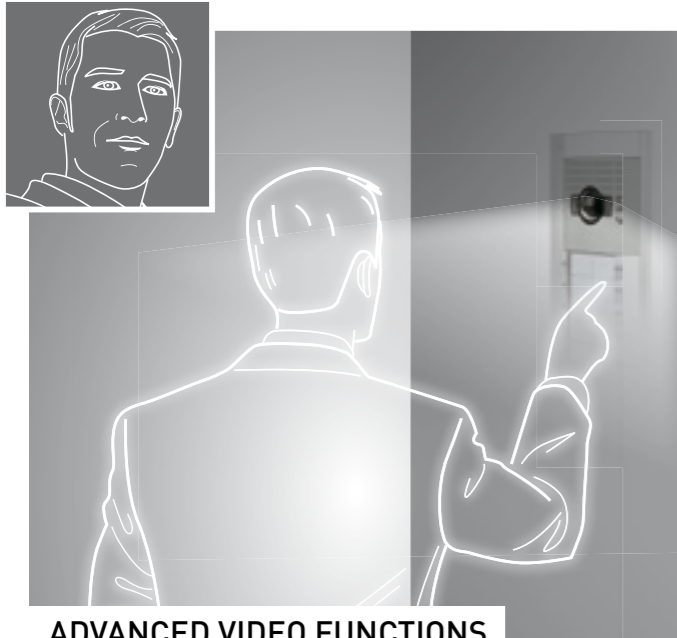
The innovative design is the guarantee of a product **CAPABLE OF DOING EVERYTHING.**

- Protection index against dust and water sprays IP54
- Protection index against mechanical impact up to IK10
- High protection from UV rays and saline mists

2 WIRE TECHNOLOGY FOR MAXIMUM PERFORMANCE



The 2 wire technology gives the possibility of turning an audio system into a colour video system without need for modifications on the system structure

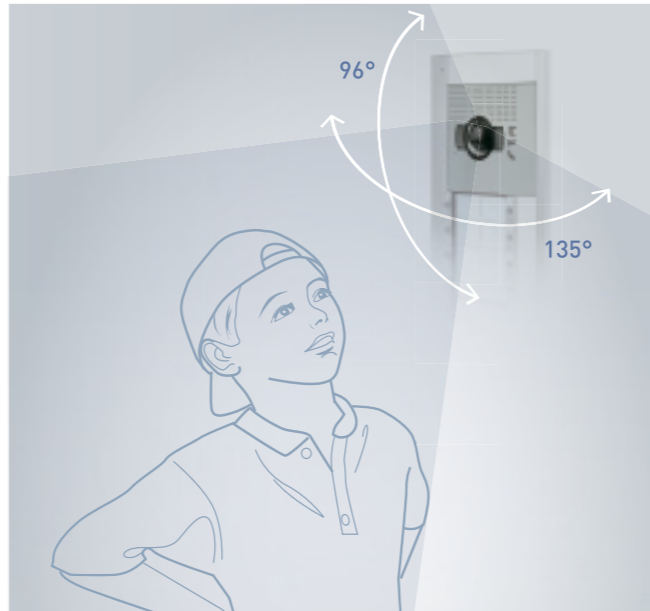


ADVANCED VIDEO FUNCTIONS

■ NIGHT & DAY



Perfect and clear images also in low light conditions thanks to the IR LEDs and the automatically removable IR filter.



■ WIDE ANGLE CAMERA

Wide horizontal and vertical shooting range. Better protection against vandals and possibility of use by children and disabled people.



DOOR LOCK RELEASE FUNCTIONS

■ KEYPAD



■ BADGE READER



■ FINGERPRINT READER

Advanced devices, perfectly integrated in terms of look with the SFERA pushbutton panels, but which can also be used in stand alone systems. Simplified management of activations, programming of residents directly on the device, without need for removal, or to use accessory programming aids.

SAFETY AND SIMPLICITY AT THE SERVICE OF THE RESIDENT

SFERA offers specific specialist solutions that enrich the wide offer of functions available to the professional, and are easy to use by the end user.

MAXIMUM ERGONOMICS



■ CALL FORWARDED

■ SYSTEM BUSY



Call forwarded



Door lock open



Communication active



INDUCTIVE LOOP AND CONTROL SPEECH SYNTHESIS



Use by people wearing hearing aids, with the selector in the T position



Use by blind people thanks to the control speech synthesis module



WIDE ANGLE CAMERA



Wide field of view
Horizontal: 135°
Vertical: 96°



Use by children and disabled people

Meeting all needs
SFERA is well suited to all
installation solutions



Horizontal configuration
SFERA NEW



Vertical configuration
SFERA NEW



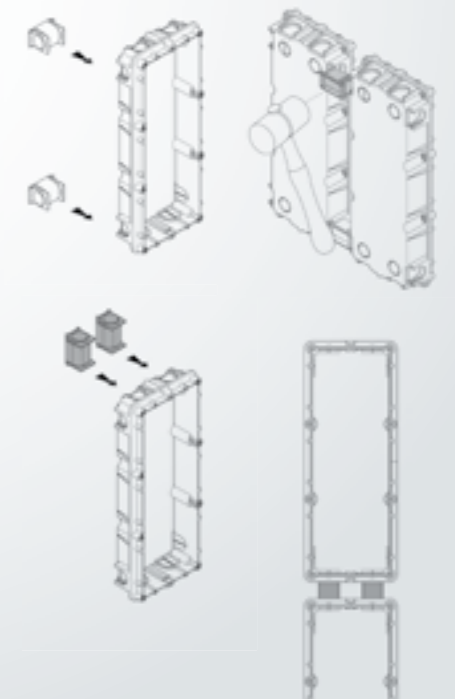
Horizontal configuration
SFERA ROBUR



Vertical configuration
SFERA ROBUR

The modules may be installed side by side horizontally or vertically.

The attention to detail during the design ensures perfect alignment of the modules thanks to the flush mounted boxes spacers (supplied with the boxes), and the screws fitted only on the front sections.

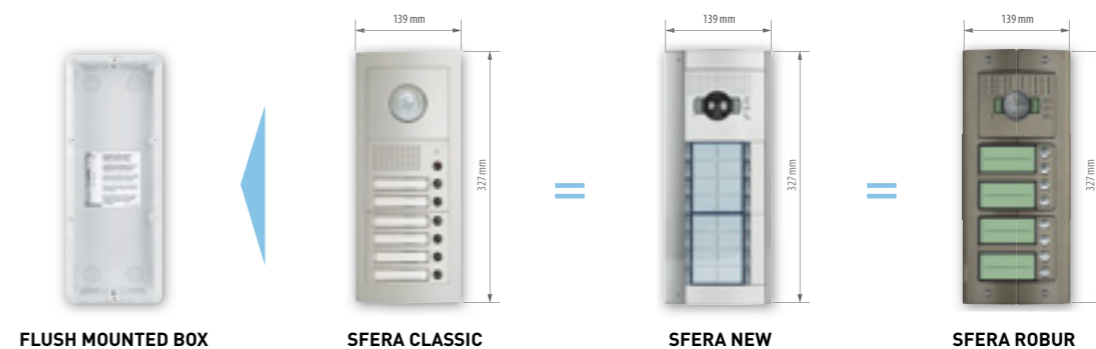


PERFECT COMPOSITION AND MAXIMUM FLEXIBILITY

■ **FLUSH MOUNTED INSTALLATION**
with standard boxes, or with specific steel
boxes with tearing protection (Robur only).

■ **TOTAL INSTALLATION COMPATIBILITY
WITH THE SFERA CLASSIC RANGE.**
Same box, same sizes, ideal in case of
refurbishments.

■ **WALL MOUNTED INSTALLATION**
with specific lowered surface mounted
box, with minimum protrusion and in-built
rainshield.





Clips for securing the front cover to the electronic module



Mini-USB connection and loudspeaker/microphone volume adjustment

SFERA is innovative also in terms of configuration and maintenance operations.

Without removing the pushbutton panel from the wall it is possible to: adjust the microphone volume, replace or update the nameplate, configure the device using the software, and update the device.

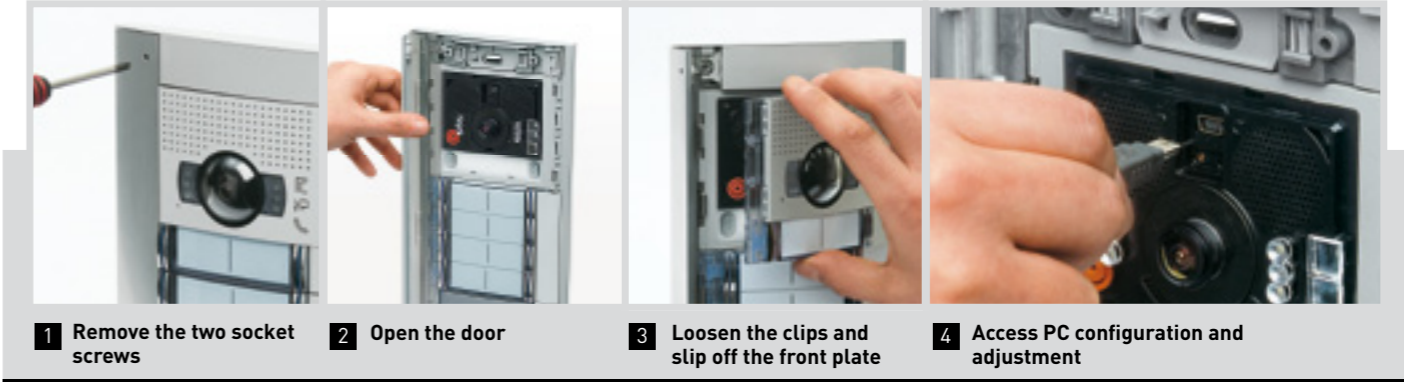
All the operations, with the exception of the configuration performed using physical configurators, are possible without disassembling the module.

SFERA New and SFERA Robur can be configured traditionally, using physical configurators, as far as the basic functions are concerned.

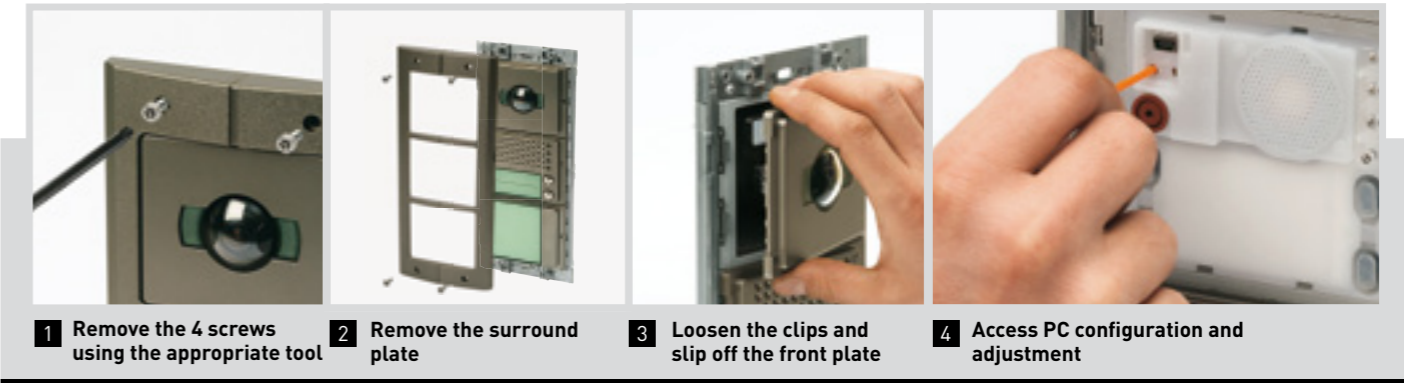
Or the specific **TISFERADESIGN** configurator may also be used (this can be downloaded from the following website: www.bticino.com) which offers extreme flexibility in:

- Guiding the installer in the selection and combination of the modules
- Configuring and customising advanced functions
- Producing and printing the nameplates

SFERA^{NEW}



SFERA^{ROBUR}



EASE OF CONFIGURATION AND MAINTENANCE

RANGE OF ENTRANCE PANELS

SFERA^{NEW}



PUSHBUTTON CALL



CALL FROM ADDRESS BOOK



DIGITAL CALL



SFERA^{ROBUR}





For the preparation of estimates of 2 WIRE audio and video door entry systems, BTicino supports the professionals of the sector with dedicated estimate and design tools:

FREE ESTIMATE SERVICE

- Detailed list of items required
- System block diagram and multi-wire connection diagram for the individual devices
- Configuration of all the system devices
- Current absorption checks

Toll free number active 8.30-18.30 Monday to Friday, and 8.30-12.30 Saturday



YOU DIAGRAM SOFTWARE

Utility for the design and configuration of 2 WIRE audio and video door entry systems.

You Diagram is the BTicino software for designing 2-wire one-family and multi-family video door entry systems. It can be used for producing the system diagram, selecting / dressing entrance panels and cameras, for the configuration of

the devices, and to check the absorption levels on the system BUS. It just a few seconds it is possible to design audio and video door entry systems with optional services, using the product solutions most suited to the requirements.

The software may be downloaded free of charge from the website www.bticino.com
 → technical support
 → software and diagram

For detailed technical information the user can view the available documentation by visiting the www.bticino.com website



SUPPORT SERVICE BEFORE SALE

SFERA NEW - SFERA ROBUR
ELECTRONIC MODULES CATALOGUE



351000

BASIC speaker module for the creation of 2 WIRE audio systems. Fitted with loudspeaker and microphone volume adjustment. It manages up to 100 pushbutton calls using additional double row pushbuttons. It can be used for opening an electrical door lock directly connected to the S+ and S- clamps (18 V 4 A impulsive - 250 mA holding current 30 Ohm max) and the connection to a local door lock release pushbutton on the PL clamps. To be completed with surround plate. The device must be physically configured.



351100

Speaker module for the creation of 2 WIRE audio & video systems. Fitted with loudspeaker and microphone volume adjustment. It can manage up to 100 pushbutton calls when using additional double row pushbutton modules. It can be used for opening an electrical door lock directly connected to the S+ and S- clamps (18 V 4 A impulsive - 250 mA holding current 30 Ohm max) and the connection to a local door lock release pushbutton on the PL clamps. Preset for additional power supply. Fitted with front LEDs for the notification of the operating status: door lock release, communication active, call put through, and system busy. Integrated optic sensor for the switching on of the night backlighting. To be completed with surround plate. The device can be configured either physically or using the PC and the TiSferaDesign software.



351200

Audio video module for the installation of 2 WIRE colour video systems. With Colour camera with 1/3" sensor and white LEDs for the lighting of the shooting field. Mist prevention heating resistance. Loudspeaker and Microphone volume adjustments. It can manage up to 98 pushbutton calls using the additional double row pushbutton modules. Horizontal and vertical camera position adjustment, +/- 10° in both directions. It offers the possibility of opening an electrical door lock directly connected to clamps S+ and S- (18 V 4 A impulsive - 250 mA holding current 30 Ohm max) and of connecting a local door lock release pushbutton on clamps PL. Preset for additional power supply. Fitted with front LEDs for the notification of the operating status: door lock release, communication active, call put through, and system busy. Integrated optic sensor for the switching on of the night backlighting. To be completed with surround plate. The device must be configured physically or using a PC and the TiSferaDesign software.



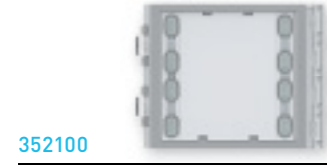
351300

Wide angle audio/video module for the installation of 2 WIRE colour video systems. With Colour camera with 1/3" sensor and white LEDs for the lighting of the shooting field. Mist prevention heating resistance. Loudspeaker and Microphone volume adjustments. It can manage up to 98 pushbutton calls using the additional double row pushbutton modules. It offers the possibility of opening an electrical door lock directly connected to clamps S+ and S- (18 V 4 A impulsive - 250 mA holding current 30 Ohm max) and of connecting a local door lock release pushbutton on clamps PL. Preset for additional power supply. Fitted with front LEDs for the notification of the operating status: door lock release, communication active, call put through, and system busy. Integrated optic sensor for the switching on of the night backlighting. To be completed with surround plate. The device must be configured physically or using a PC and the TiSferaDesign software.



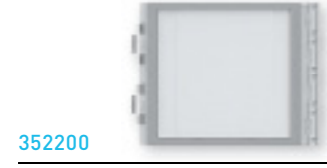
352000

Additional 4-pushbutton modules arranged on single column. To be used with speaker modules 351000 - 351100 and audio/video modules 351200 - 351300. Connection using the appropriate multicable supplied. Backlighting of nameplates controlled by the speaker module or the audio/video module connected. To be completed with surround plate.



352100

Additional 8-pushbutton modules arranged on double column. To be used with speaker modules 351000 - 351100 and audio/video modules 351200 - 351300. Connection using the appropriate multicable supplied. Backlighting of nameplates controlled by the speaker module or the audio/video module connected. To be completed with surround plate.



352200

Nameplate module normally used for displaying the house number or other notifications (e.g. Legend for calls using digital pushbutton panels, opening/closing times, etc.). Connection using the appropriate multicable supplied. Night backlighting controlled by the speaker module or the audio/video module connected. To be completed with surround plate.



352400

Night & Day and wide angle camera module for the installation of colour video systems. Fitted with 1/3" sensor with N&D function and automatic removal of the IR filter. IR LED for the lighting of the field of view. Mist prevention heating resistance. Automatic brightness adjustment. Connection to the speaker module (351100) using the multicable supplied. To be completed with surround plate.



352500

Graphic display module to be used with speaker module 351100 or with audio/video modules 351200 - 351300 (connection using the multicable supplied). It can operate in two modes: call from address book, or digital call. The call from the address book gives the possibility of sending the call by scrolling on the display the names associated to the residents. It is possible to store up to 4000 residents names. Using the keypad module item 353000 it is also possible to directly call the apartment by entering the number corresponding to the resident. The digital call is also performed using the keypad module item 353000 by entering the numerical code. It is recommended that one or more nameplate modules, item 352200, are installed at the side of the pushbutton panel to display the correspondence between the numerical codes and the names of the users. It is possible to program the names in the address book in two different ways: manual inclusion using the pushbuttons of the display module or inclusion using a PC with the TiSferaDesign software installed, by downloading the file to the display module (RECOMMENDED). System power supply cuts do NOT cause the loss of memory data. To be completed with surround plate.



352700

Inductive loop and control speech synthesis module to be used with the 351100 speaker module or with audio/video modules 351200 - 351300. Enable use by people wearing hearing aids (fitted with T selector) or blind people thanks to the connection status voice message synthesis (call active, call ended, no answer, busy, door open). It is connected to the speaker module using the appropriate multicable supplied. To be completed with surround plate. The device can be configured either physically or using the PC and the TiSferaDesign software.



353000

Keypad module for door lock release, or for the digital call of the apartment (to be used with the display module). It is fitted with relay with contacts (C - NC - NO) and clamps (CP - P1 - P2) for the connection of a local door lock release pushbutton. The numerical code for the opening of the door lock can be programmed using the keypad itself, or using a PC after downloading the module programming file. It also has a programming reset pushbutton and LEDS for the visual notification of the access status. Night backlighting with LEDs. To be completed with surround plate. It is connected to the other modules using the appropriate multicable supplied. The device may also be used as a stand alone unit with independent power supply and operation per la sola apertura serratura. Configuration performed using physical configurators, or a PC with the TiSferaDesign software installed.



353200

RFID badge reader module for the release of the door lock by swiping the badge. It manages up to 20000 badges. It's fitted with relay contacts (C - NO - NC) and clamps (CP - P1 - P2) for the connection of a local door release pushbutton. The badge for the release of the door lock can be programmed from the module itself, or using a PC after downloading the module programming file. It also has a programming reset pushbutton and LEDS for the visual notification of the access status. Night backlighting a LEDs. To be completed with surround plate. It is connected to the other modules using the appropriate multicable supplied. The device may also be used as a stand alone unit with independent power supply and operation. Configuration performed using physical configurators, or a PC with the TiSferaDesign software installed.



353300

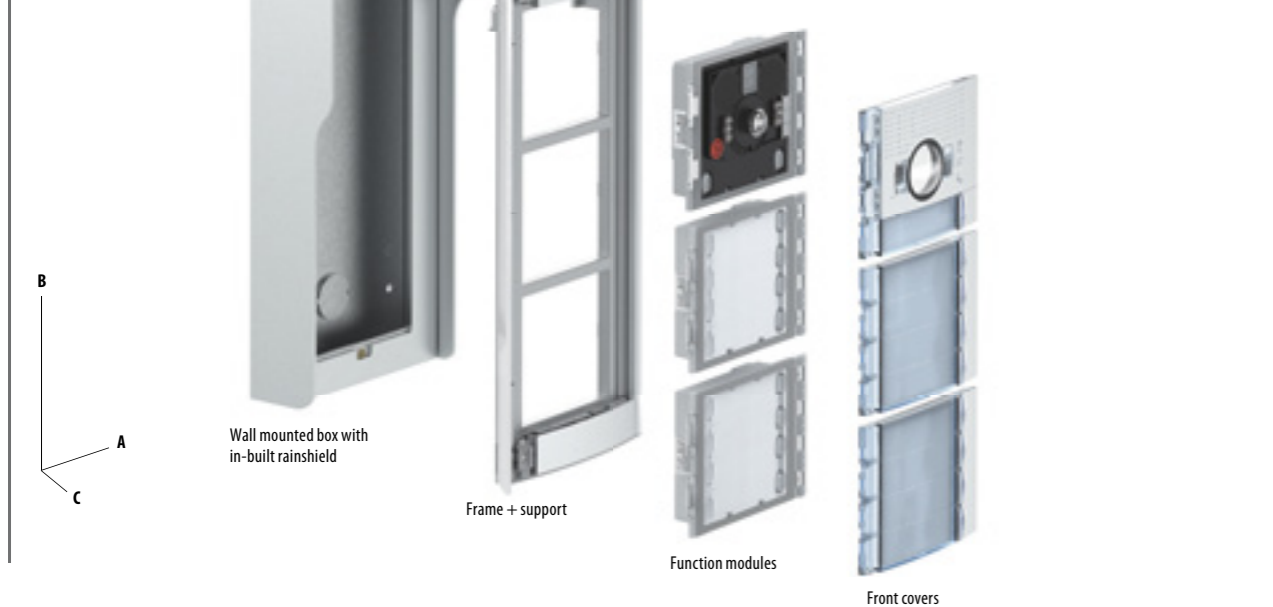
Fingerprint reader module for the release of the door lock. It's fitted with relay contacts (C - NO - NC) and clamps (CP - P1 - P2) for the connection of a local door release pushbutton. It also has a programming reset pushbutton and LEDS for the visual notification of the access status. To be completed with surround plate. It is connected to the other modules using the appropriate multicable supplied. The device may also be used as a stand alone unit with independent power supply and operation. Configuration performed using physical configurators, or a PC with the TiSferaDesign software installed.

SFERA NEW - installation and dimensional data

**SFERA^{NEW}
FLUSH MOUNTED
INSTALLATION**



**SFERA^{NEW}
WALL MOUNTED
INSTALLATION**



FLUSH MOUNTED BOXES

Item	A	B	C
350010	117	123	45
350020	117	214	45
350030	117	306	45

Note: Compatibility with SFERA CLASSIC flush mounted boxes

Note: dimensions in mm

RAINSHIELD (OPTIONAL)

Item	A	B	C
350511	151	151	50
350512	151	151	50
350513	151	151	50
350521	151	242	50
350522	151	242	50
350523	151	242	50
350531	151	334	50
350532	151	334	50
350533	151	334	50

FRAME + SUPPORT

Item	A	B	C
350442	290	242	50
350543	290	242	50
350661	290	334	50
350562	290	334	50
350563	290	334	50
350691	430	334	50
350592	430	334	50
350593	430	334	50

FUNCTION MODULES

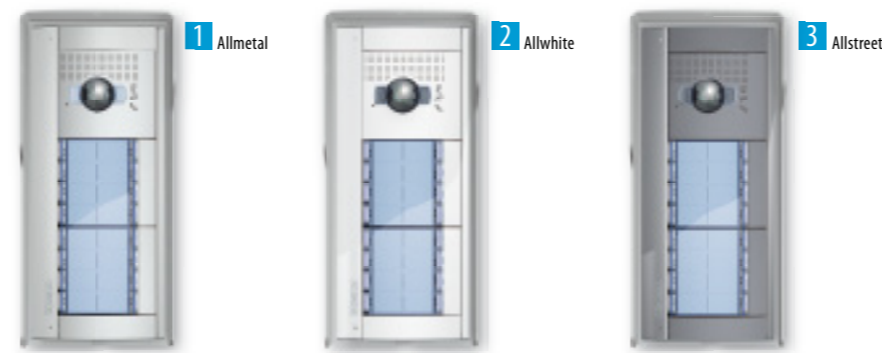
Item	A	B
350010	115	91

WALL MOUNTED BOXES WITH RAINSHIELD

Item	A	B	C
350611	155	160	81
350612	155	160	81
350613	155	160	81
350621	155	255	81
350622	155	255	81
350623	155	255	81
350631	155	360	81
350632	155	360	81
350633	155	360	81

SFERA NEW - mechanics and function modules

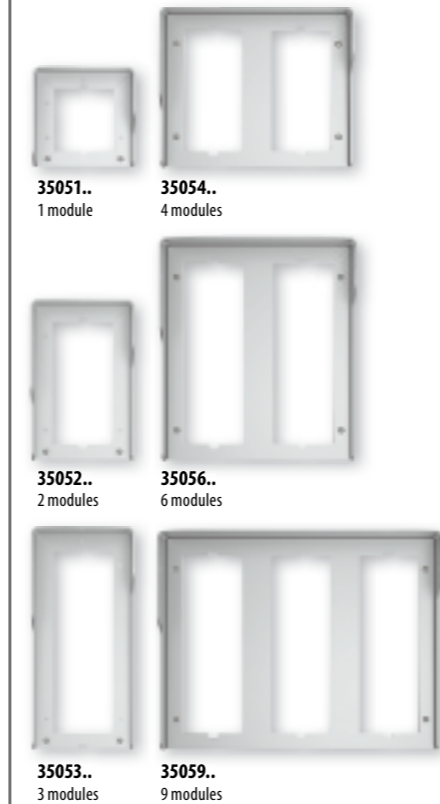
FINISHING ELEMENTS
Replace the dots in the item code with the finish number corresponding to the desired finish



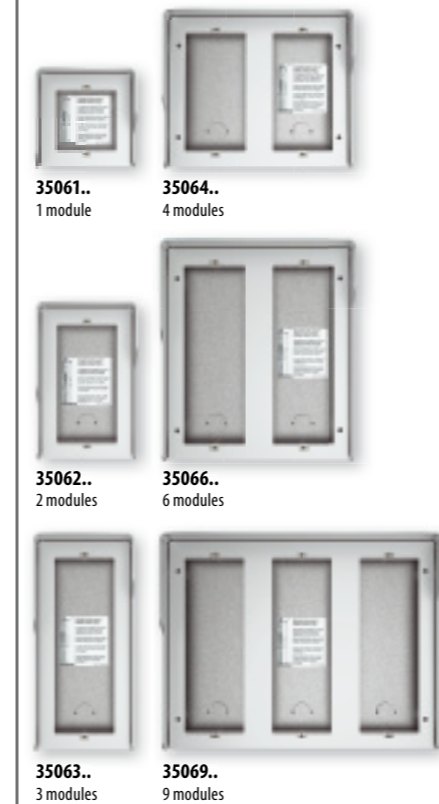
FLUSH MOUNTED BOX



RAINSHIELD (optional)



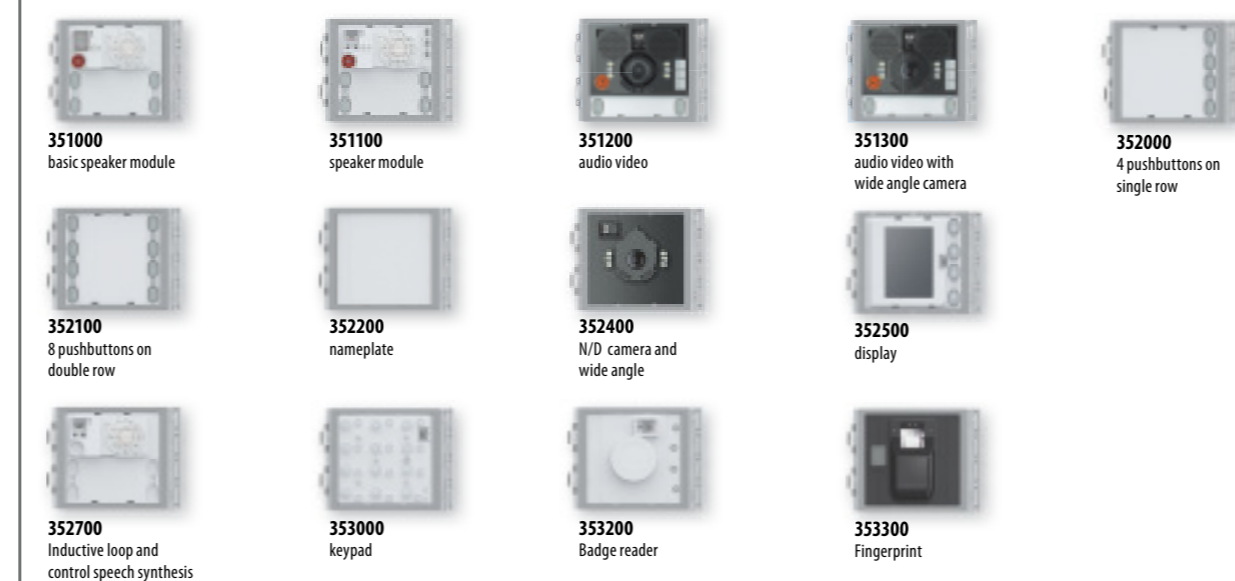
WALL MOUNTED BOX (optional)



FRAME + SUPPORT SURROUND PLATE

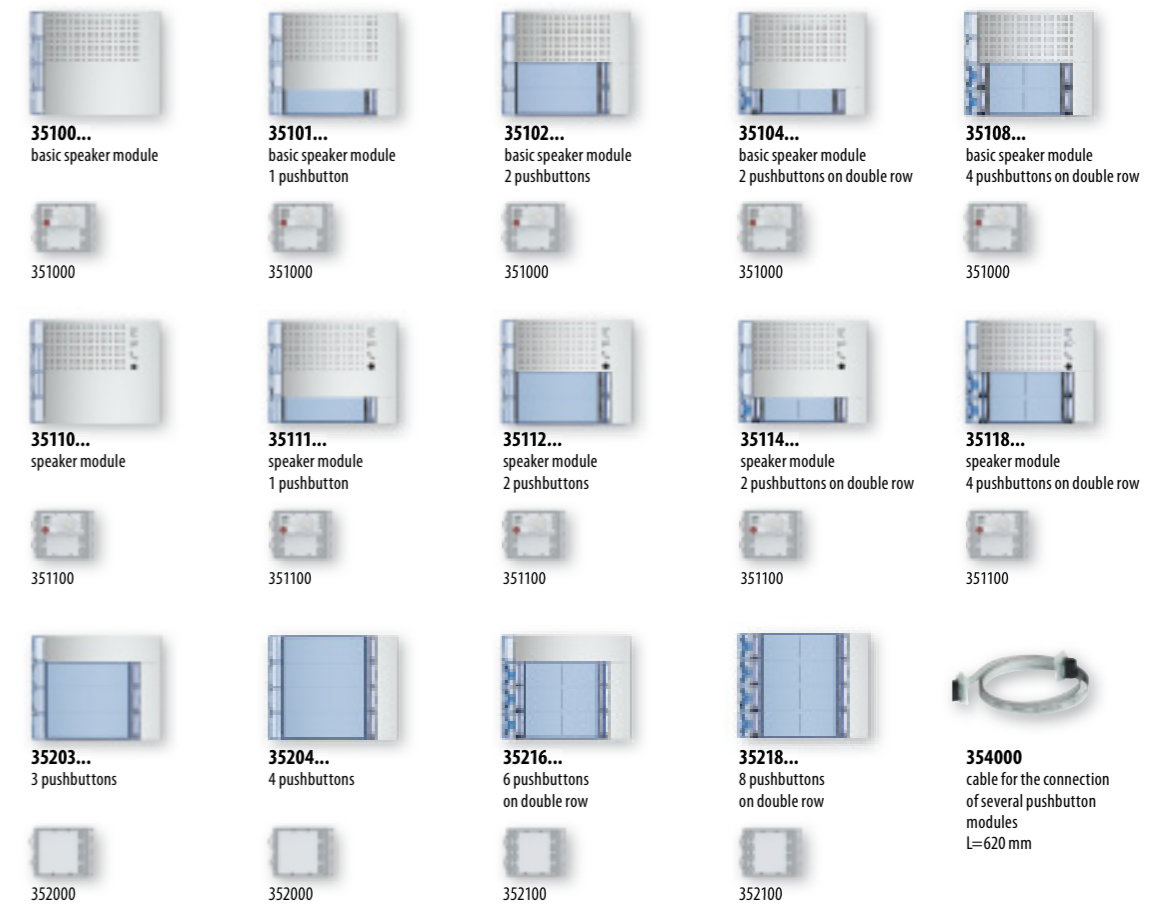


ELECTRONIC MODULES

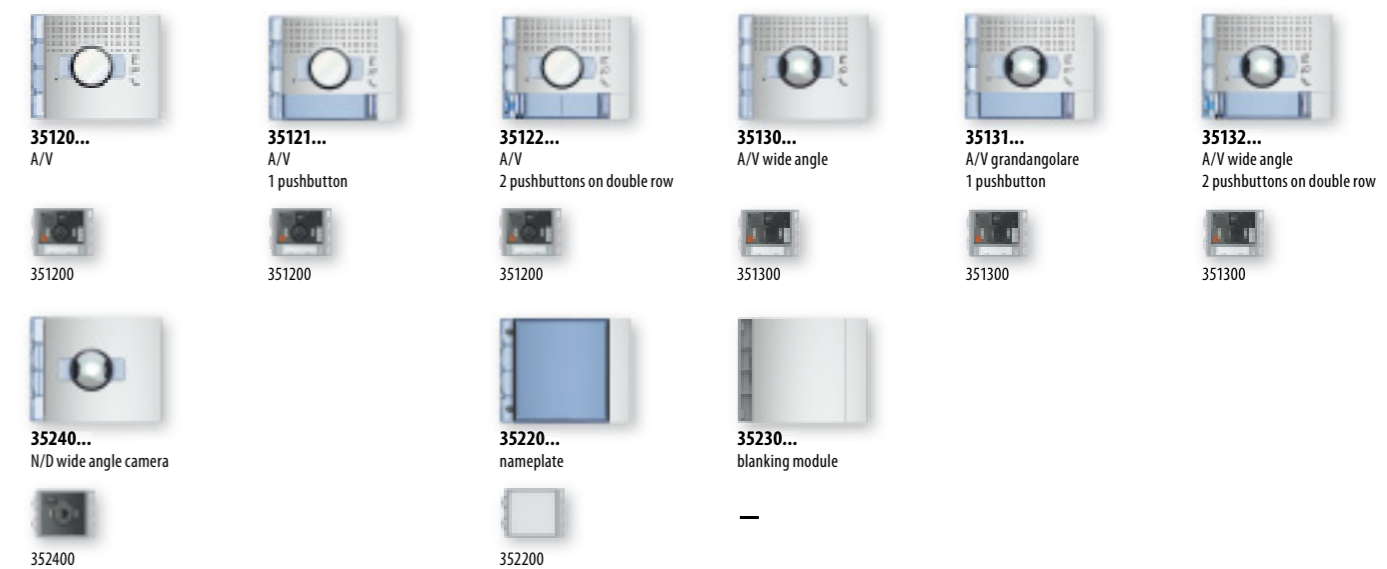


SFERA NEW - front covers

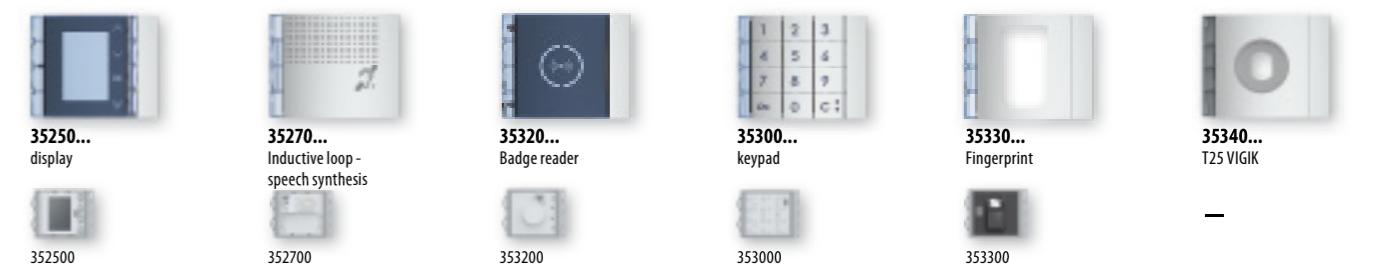
AUDIO FRONT COVERS - PUSHBUTTON CALL



VIDEO FRONT COVERS - NAMEPLATE - BLANKING MODULE

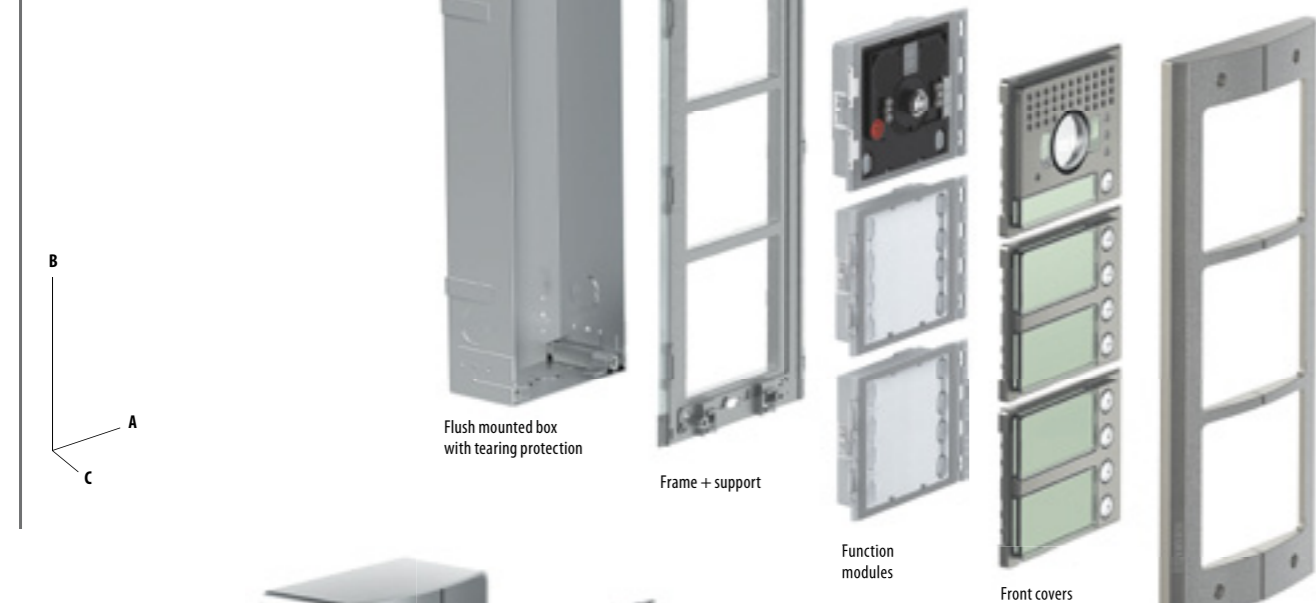


DISPLAY FRONT COVERS - INDUCTIVE LOOP AND DOOR LOCK RELEASE



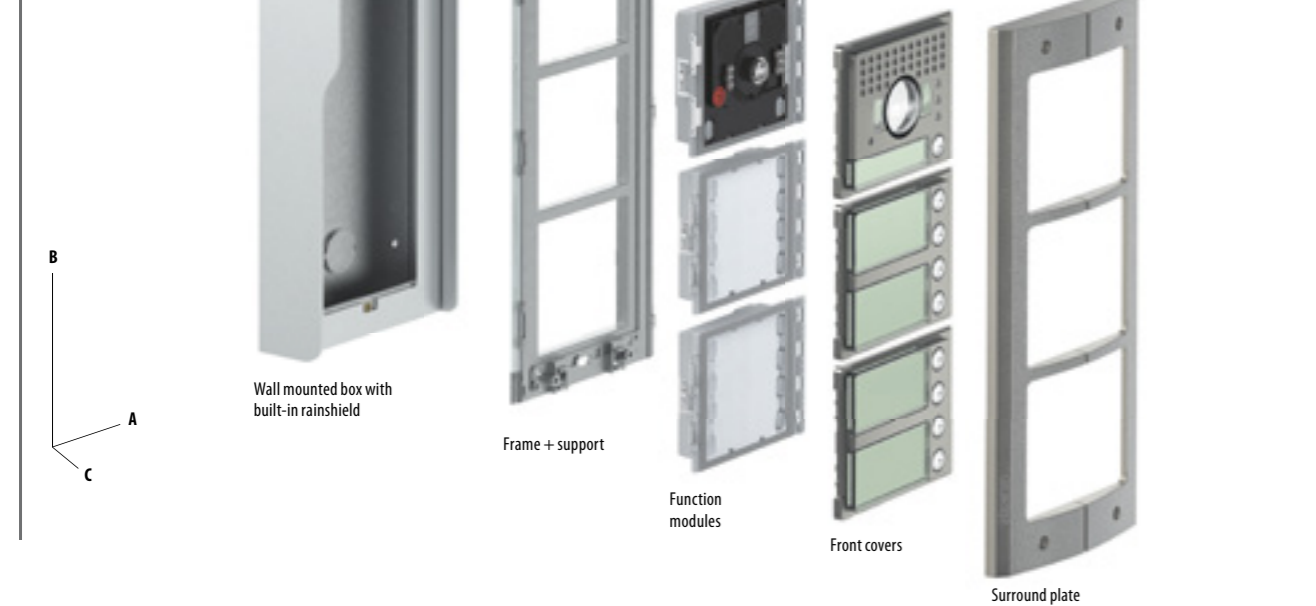
SFERA^{ROBUR}

FLUSH MOUNTED INSTALLATION



SFERA^{ROBUR}

WALL MOUNTED INSTALLATION



STEEL FLUSH MOUNTED BOX WITH TEARING PROTECTION

DIMENSIONS			
Item	A	B	C
350110	102	114	51
350120	102	206	51
350130	102	297	51

Note: Compatibility with SFERA CLASSIC flush mounted boxes

FRAME + SUPPORT

DIMENSIONS			
Item	A	B	C
350315	134	132	34,5
350325	134	223	34,5
350335	134	315	34,5

FUNCTION MODULES

DIMENSIONS	
A	B
115	91

SURROUND PLATES

DIMENSIONS			
Item	A	B	C
350415	139	144	21
350425	139	235	21
350435	139	327	21

WALL MOUNTED BOXES WITH RAINSHIELD

DIMENSIONS				DIMENSIONS			
Item	A	B	C	Item	A	B	C
350611	155	160	81	350641	290	255	81
350612	155	160	81	350642	290	255	81
350613	155	160	81	350643	290	255	81
350621	155	255	81	350661	290	360	81
350622	155	255	81	350662	290	360	81
350623	155	255	81	350663	290	360	81
350631	155	360	81	350691	430	360	81
350632	155	360	81	350692	430	360	81
350633	155	360	81	350693	430	360	81

Note: Dimensions in mm

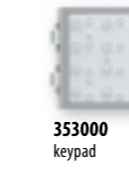
FLUSH MOUNTED BOX



WALL MOUNTED BOX (optional)



ELECTRONIC MODULES



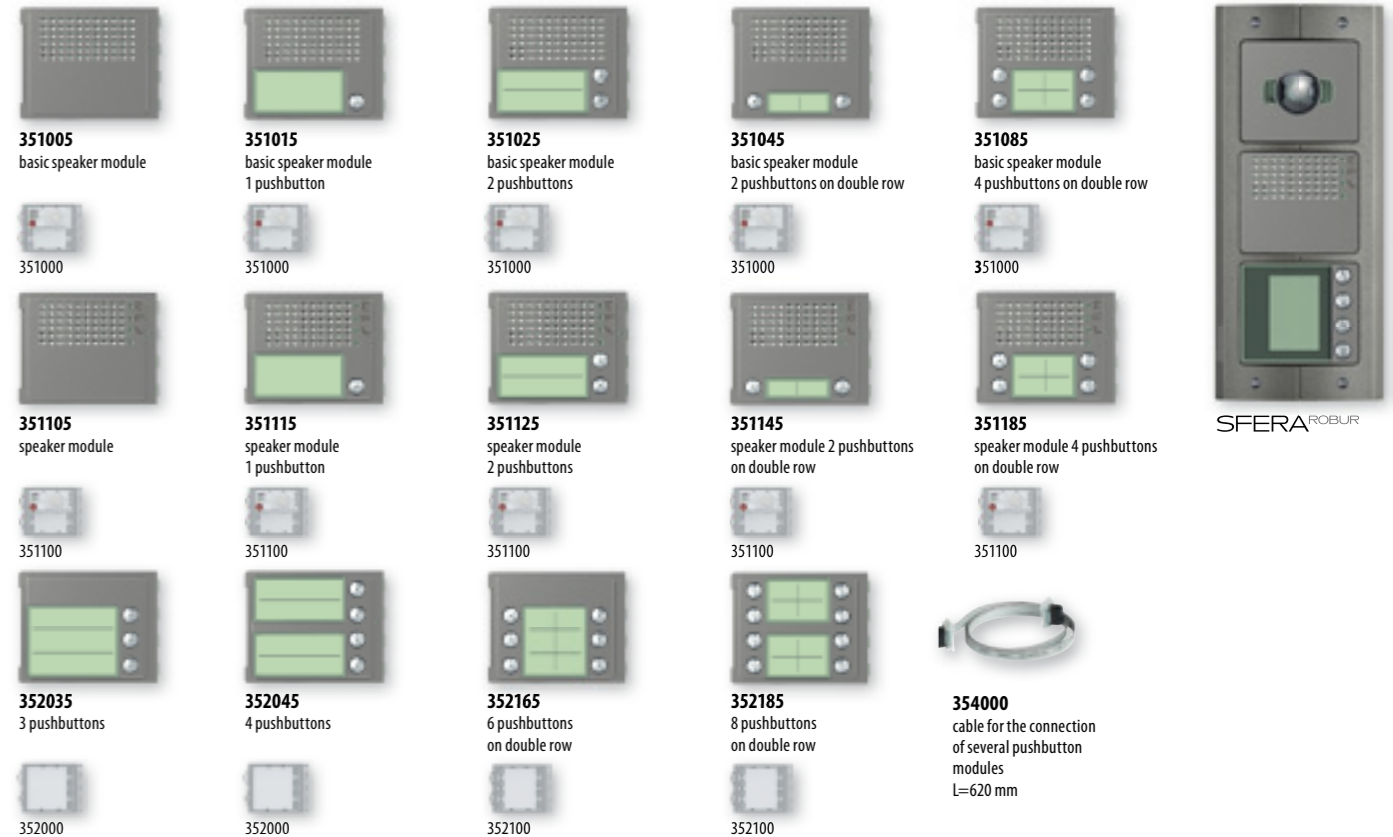
SUPPORT FRAME



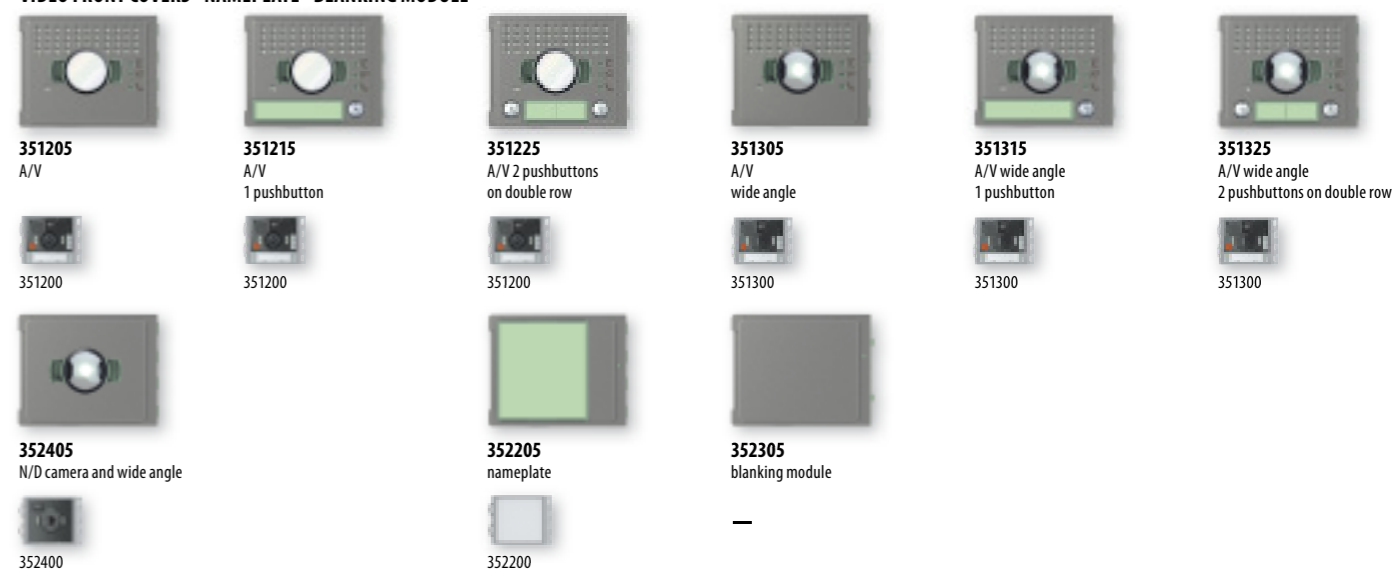
SURROUND PLATE FINISH



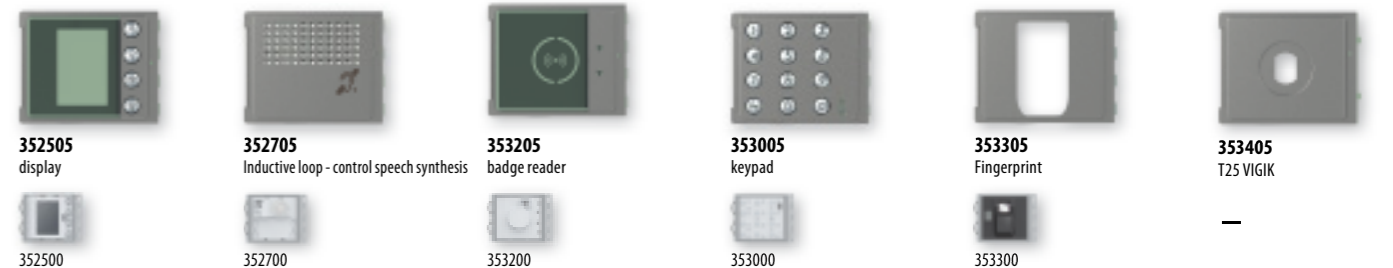
AUDIO FRONT COVERS - PUSHBUTTON CALL



VIDEO FRONT COVERS - NAMEPLATE - BLANKING MODULE



DISPLAY FRONT COVERS - TELELOOP AND DOOR OPENER



BTicino SpA
Via Messina, 38
20154 Milano - Italia
www.bticino.com

BTicino SpA reserves at any time the right to modify the contents of this booklet and to communicate, in any form and modality, the changes brought to the same.
AD - EXCM12SFB/UK - Edition 04/2012